

**BEDFORD COUNTY DIVISION OF BUILDING INSPECTION
REPORT FOR FY 2009**

	<u>FY 2009</u>	<u>FY 2008</u>
Estimated Valuation:	\$ 90,784,891	\$170,770,127
Total Inspections:	25,345	28,726

BLUE RIDGE CENTER JEFFERSON LAKES PEAKS TOTAL

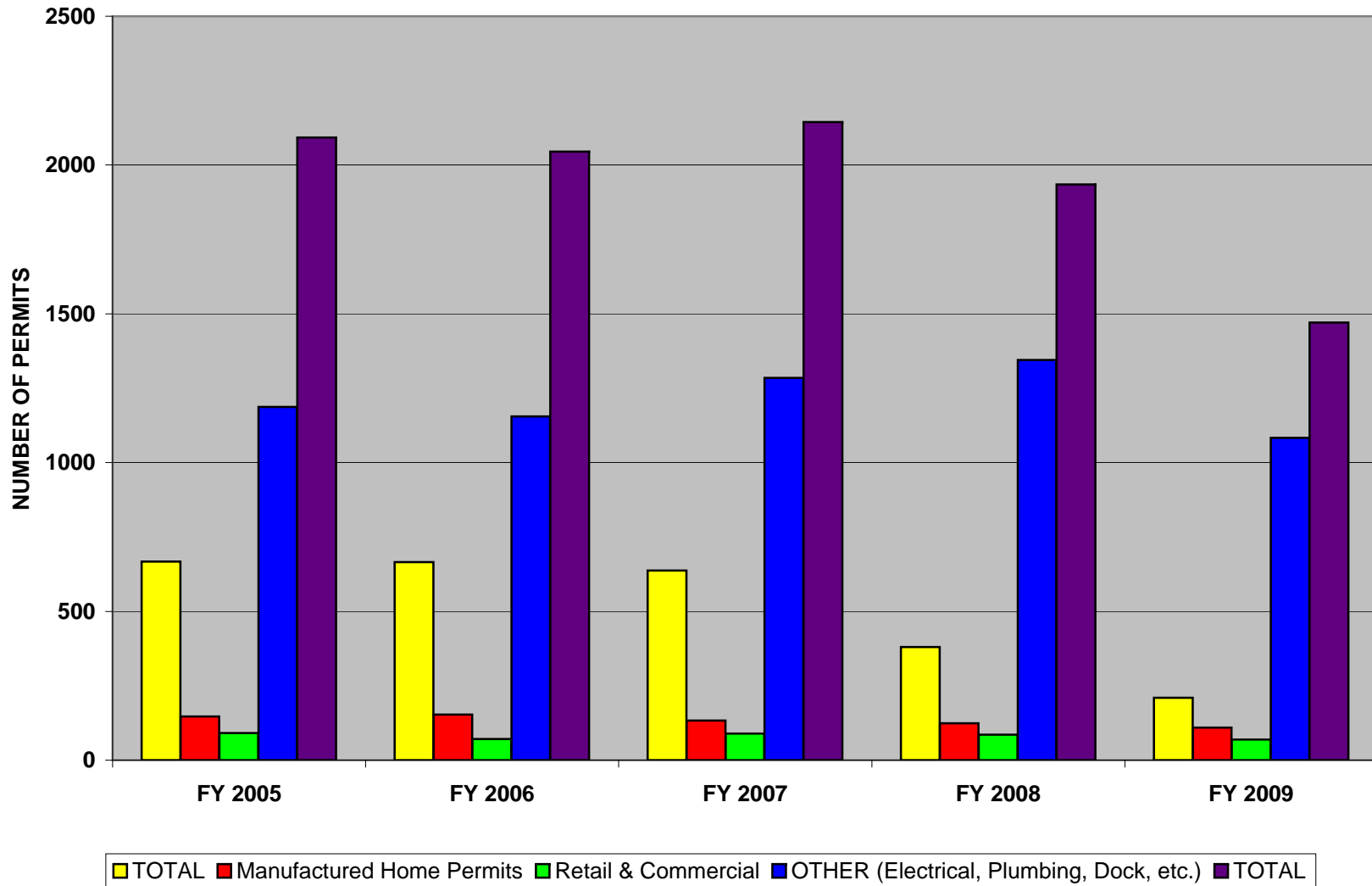
TYPE	2009	2008	2009	2008	2009	2008	2009	2008	2009	2008	2009	2008
SFD	29	43	20	46	74	142	64	119	17	24	204	374
MFD	0	0	0	0	3	6	3	0	0	0	6	6
AAA	42	78	42	61	123	188	87	115	21	25	315	467
MH	30	33	14	27	11	18	31	26	23	20	109	124
R&C	4	11	10	10	27	32	23	29	4	3	68	85
M&W	0	0	0	0	0	0	0	1	1	0	1	1
OTHER	146	133	104	118	161	224	263	311	94	92	768	878
GRAND TOTAL	251	298	190	262	399	610	471	601	160	164	1,471	1,935

<u>Explanation:</u>
SFD - Single Family
MFD - Multi-Family
AAA - Alteration & Addition
MH - Mobile Home
R&C - Retail & Commercial
M&W - Manufacturing & Warehouse

	<u>FY 2009</u>	<u>FY 2008</u>
RECEIPTS:	\$ 267,772.26	\$428,036.22
LESS SURCHARGE:	4,272.72	6,862.19
NET RECEIPTS:	<u>\$263,499.54</u>	<u>\$421,174.03</u>

FY '09 Waived Fees: \$3,986.75

BEDFORD COUNTY PERMITS BY TYPE FOR FY05- FY09*



BEDFORD COUNTY BUILDING PERMITS FOR FY05- FY09*

